

P65 GRAVITY FEED PAVER



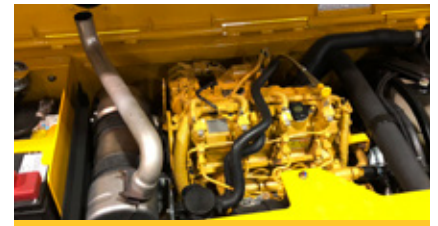
GRAVITY FEED HOPPER.

The gravity fed 6-ton (5.4 mt) hopper features a hydraulically raised floor and wings with two independently operated hydraulic cut-off doors for exceptional material management.



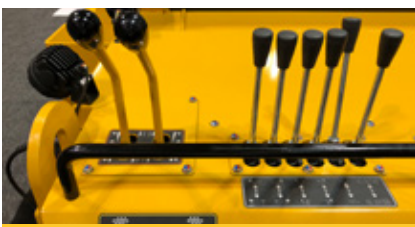
ELECTRIC SCREED HEAT.

The Weiler designed screed delivers outstanding mat quality and a standard paving range of 7' 8" (2.3 m) to 13' (3.35 m). Four heating elements and optional heated end gates are powered by an hydraulically driven 12 kW generator.



POWERTRAIN.

A Cat® C2.2 Tier 4 engine provides 49 hp (36 kW) and powers a 2-speed hydrostatic drive with 180 fpm (55 m/min) max paving speed and 300 fpm (91 m/min) max transport speed.



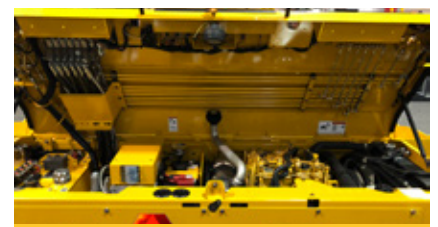
SIMPLE OPERATION.

Dual side operation with manual ground drive controls, independent augers with reverse and color LCD display providing machine conditions and diagnostics.



DURABLE UNDERCARRIAGE.

The undercarriage features 55" (1397 mm) track length with 39" (990 mm) of ground contact, 12" (305 mm) steel track pads, a sprocket driven 125 mm track chain pitch and automatic track tensioning.



FAST SERVICE.

Remote grease lines, spray down system with 7 gal (26 L) tank and coiled hoses, large engine access door and Caterpillar dealer service and support keep your machine up and running with limited down time.

P65 SPECIFICATIONS

WEIGHT	12,600 lb	5715 kg	SCREED WEIGHT	2,100 lb	952 kg	13	ENGINE	Cat® C2.2 Tier 4	
LENGTH	9' 9"	2.97 m	MAIN PLATE WIDTH	13"	330 mm		PAVING SPEED	180 fpm	55 mpm
WIDTH	98"	2.48 m	EXTENSION PLATE WIDTH	7"	178 mm		TRANSPORT SPEED	300 fpm	91 mpm
HEIGHT	70"	1.78 m	SCREED HEAT	Electric - 4 elements			FUEL CAPACITY	25 gal	94 L
TRUCK CLEARANCE	20.75"	557 mm	VIBRATION	1 x 2500 vpm			HYDRAULIC CAPACITY	22 gal	83 L
AUGER DIAMETER	9"	229 mm	MAX AUGER SPEED	125 rpm			SPRAY DOWN CAPACITY	7 gal	26 L

POWERTRAIN

Cat® C2.2 Tier 4 engine provides 49 hp (36 kW)
2-speed hydrostatic drive, 300 fpm (91 m/min) transport speed
Automatic track tensioning
55" (1397 mm) track length with 39" (990 mm) of ground contact
12" (305 mm) steel track pads
Sprocket driven 125 mm track chain pitch
Hydraulically driven 12 kW generator

MATERIAL DELIVERY

Gravity fed, hydraulically raised hopper floor and wings
6-ton (5.4 mt) hopper
2 independently operated hydraulic cut-off doors

SIMPLE OPERATION

Dual side operation
Manual ground drive controls
Color LCD display provides conditions and diagnostics
Pause mode enables return to same settings

SALES AND SERVICE

Sold and serviced exclusively through Caterpillar dealers worldwide.

WWW.WEILERPRODUCTS.COM

SCREED

7' 8" (2.3 m) to 13' (3.35 m) standard paving width
4 element electric heated screed
1/4" (6.35 mm) screed plate standard, 3/8" (9.5 mm) optional
Two independently operated hydraulic 9" (228 mm) augers w/reverse
Optional sonic feed sensors

SERVICE/MAINTENANCE

7 gal (26 L) spray down system with 2 hoses/nozzles
Braided electrical harnesses and sealed connections
12-volt electric system with automotive-type fuses
Remote hydraulic diagnostic ports
Remote grease fittings
Large engine access door

OPTIONAL EQUIPMENT

LED strobe light
Work lights
Heated end gates
Sonic controlled augers
Spray down tank

WARRANTY

12 months standard. Extended warranty available.