

# CAT® REBUILDS FOR MINING EQUIPMENT

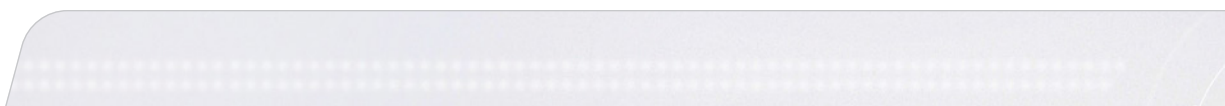




# CONTENTS

TABLE OF

- 05 | CAT CERTIFIED REBUILDS VS. CUSTOM DEALER REBUILDS
- 07 | CAT CERTIFIED REBUILD
- 08 | THE VALUE OF CAT CERTIFIED REBUILDS
- 09 | THE CAT REBUILD OPTIONS AT A GLANCE
- 11 | CAT CERTIFIED POWERTRAIN AND POWERTRAIN PLUS REBUILD
- 12 | CAT CERTIFIED COMPONENT REBUILD
- 13 | MORE CAT CERTIFIED REBUILD OPTIONS
- 14 | APPLICABLE MACHINES
- 15 | FREQUENTLY ASKED QUESTIONS



# A LOOK AT CAT CERTIFIED REBUILDS AND CUSTOM DEALER REBUILDS

**YOU'VE GOT QUITE A FEW CAT REBUILD OPTIONS. THE BEST PART? YOU GET TO CHOOSE THE ONE YOU LIKE BEST.**

THERE ARE SEVERAL WAYS TO GET YOUR EQUIPMENT BACK TO LIKE-NEW CONDITION. WHETHER YOU PREFER THE CCR PROGRAM — THAT OFFERS COMPREHENSIVE AND THOROUGH REBUILD OPTIONS AND THE BENEFITS OF A NEW CAT MACHINE, OR YOU PREFER TO WORK WITH YOUR DEALER TO TAILOR A REBUILD SPECIFIC TO YOUR MACHINE'S NEEDS, YOU GET TO WORK WITH THE BEST DEALER NETWORK THERE IS.

CAT CERTIFIED REBUILD	CUSTOM DEALER REBUILD
<ul style="list-style-type: none"> <li>+ The Cat Certified Process</li> <li>+ Restores to like-new performance</li> <li>+ Optional full EPP coverage</li> <li>+ New Rebuild Identification Number (RIN) number for machine</li> <li>+ New parts warranty on all replaced parts</li> <li>+ Required updates</li> </ul>	<ul style="list-style-type: none"> <li>+ Negotiable/Tailored plan</li> <li>+ Limited EPP coverage</li> <li>+ Dealer Exchange Components and a range of parts replacement options</li> <li>+ Mix and match rebuild levels to meet your needs</li> <li>+ Additional models covered</li> </ul>



## A SIMPLE SOLUTION TO A COMPLEX PROCESS

The Cat® rebuild process is very complex. Whether the best option for you is a Cat Certified Rebuild or a Custom Dealer Rebuild, the Global Cat Dealer Network is here to help.

Your Cat dealer offers equipment expertise like no other. With a rebuild, you'll have new Equipment Protection Plan (EPP) coverage options, the option to finance through Cat Financial, and of course, you'll get the benefit of easy access to all the parts and service you need to keep your equipment running. Your Cat dealer is your one-stop shop for support.

## CAT REBUILDS

**FIVE BUILT-IN BENEFITS OF**

**You** get the most economic value out of your original equipment investment

1

**You** keep your equipment while restoring its original performance and productivity levels

2

**You** benefit from enhancements after your equipment was first manufactured

3

**You** get the choice to upgrade optional features and technologies to current standards — a great way to reduce costs, boost productivity and enhance safety at a lower cost than buying new.

4

**You** get support and services from your dealer and financing options through Cat Financial

5

# CAT CERTIFIED REBUILDS. MORE THAN JUST A NEW LIFE

THE CAT CERTIFIED REBUILD PROCESS COVERS ALL THE BASES. FROM PEAK PERFORMANCE TESTING TO LIKE-NEW COVERAGE AND IDENTIFICATION, YOUR CAT CERTIFIED REBUILD OFFERS A FULL PACKAGE OF SUPPORT. CHECK IT OUT.



## PEAK PERFORMANCE TESTING

There are several ways to get your equipment back to like-new condition. Whether you prefer the CCR program — that offers comprehensive and thorough rebuild options and the benefits of a new Cat machine, or you prefer to work with your dealer to tailor a rebuild specific to your machine's needs, you get to work with the best dealer network there is.



## RECONDITIONING WORK

You'll get complete work that goes above and beyond to return your machine to like-new condition. Examples include reconditioning the frame, replacing electronic control modules, wiring harness and updating software.



## EXTENSIVE EVALUATIONS

A complete machine rebuild includes more than 350 tests. It starts with pre-rebuild core inspections and continues until the final inspection and customer evaluation.



## AUTOMATIC PART REPLACEMENT

Parts that don't meet the strict reusability & salvage guidelines are replaced automatically. For a machine rebuild, that amounts to approximately 7,000 parts.



## LIKE-NEW COVERAGE AND IDENTIFICATION

A Rebuild Identification Number (RIN) provides your rebuilt machine with a brand-new identity. You'll also get a like-new warranty and optional Equipment Protection Plan (EPP).

CAT EQUIPMENT ISN'T MADE FOR ONE LIFE,  
**IT'S MADE FOR MANY.** A CAT REBUILD BRINGS  
YOUR MACHINE BACK TO **LIKE-NEW CONDITION.**

## A CAT CERTIFIED REBUILD ADDS VALUE

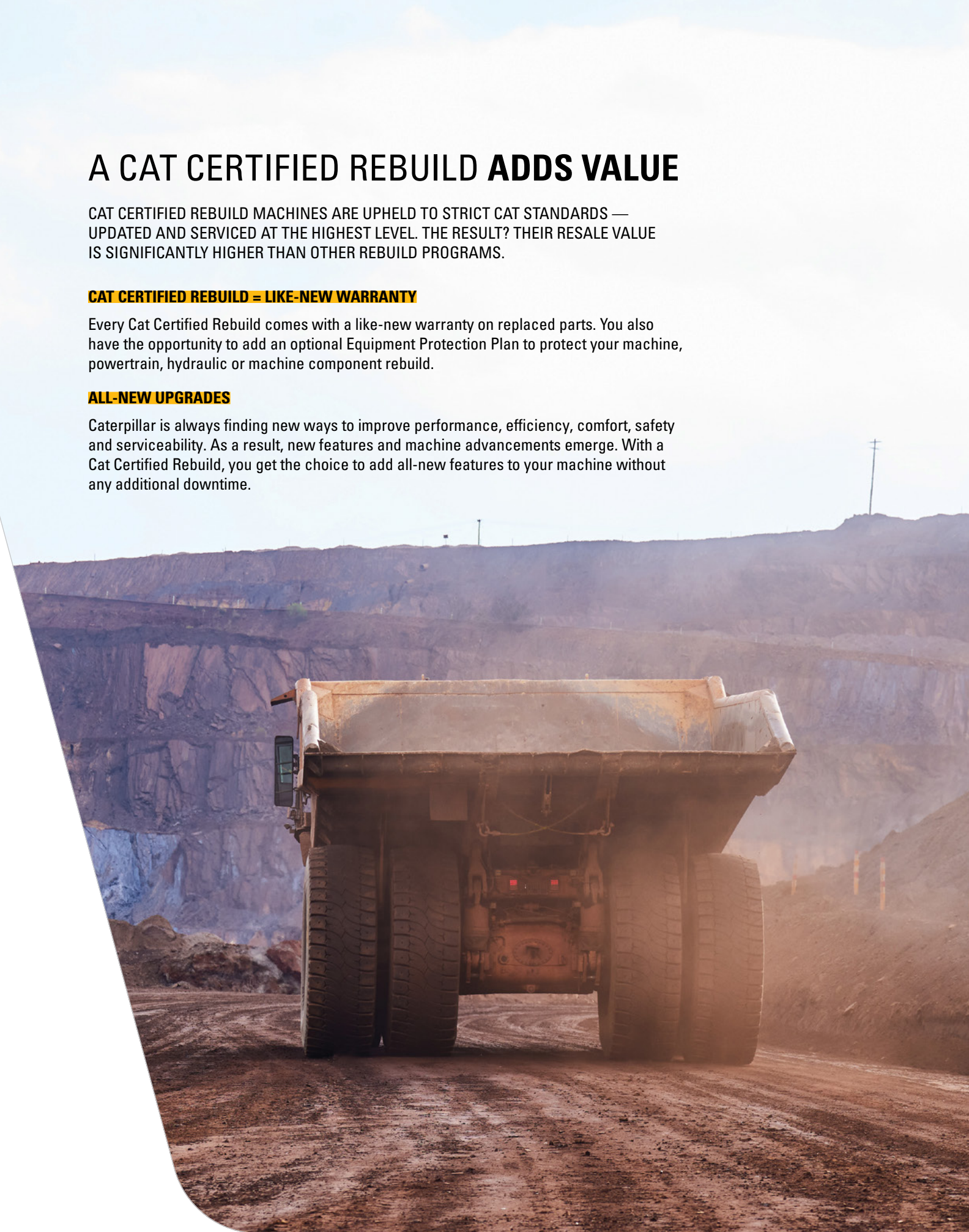
CAT CERTIFIED REBUILD MACHINES ARE UPHELD TO STRICT CAT STANDARDS — UPDATED AND SERVICED AT THE HIGHEST LEVEL. THE RESULT? THEIR RESALE VALUE IS SIGNIFICANTLY HIGHER THAN OTHER REBUILD PROGRAMS.

### CAT CERTIFIED REBUILD = LIKE-NEW WARRANTY

Every Cat Certified Rebuild comes with a like-new warranty on replaced parts. You also have the opportunity to add an optional Equipment Protection Plan to protect your machine, powertrain, hydraulic or machine component rebuild.

### ALL-NEW UPGRADES

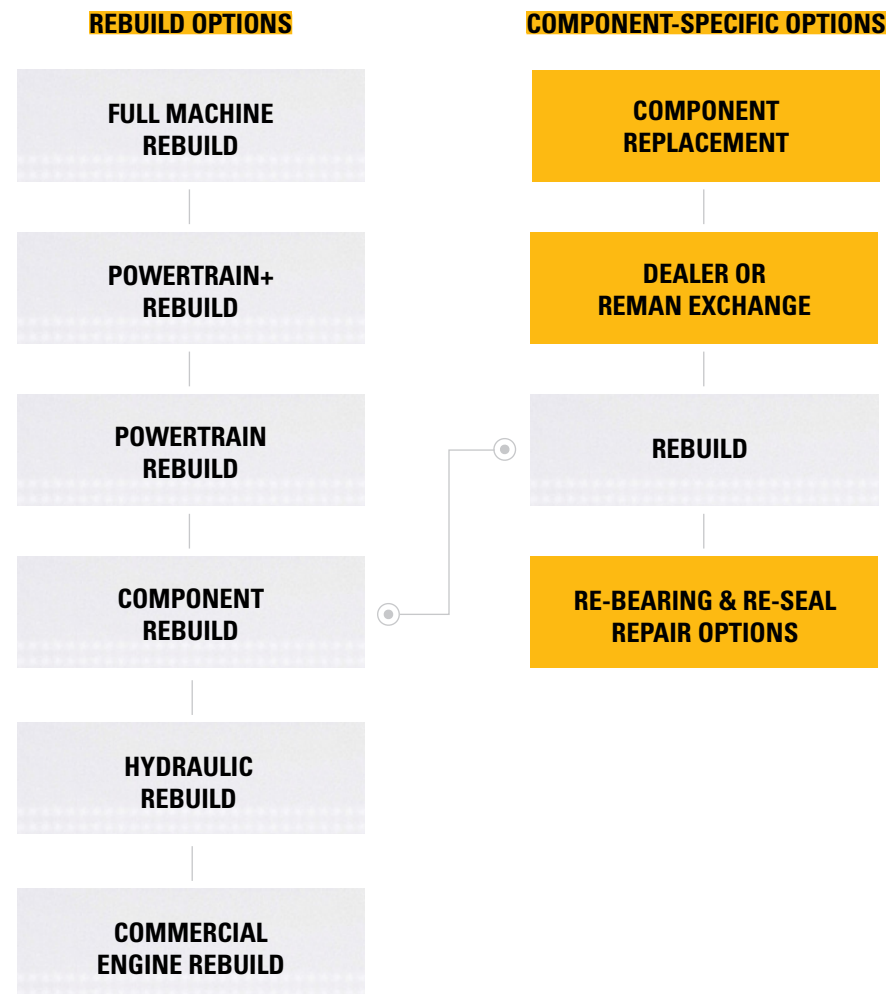
Caterpillar is always finding new ways to improve performance, efficiency, comfort, safety and serviceability. As a result, new features and machine advancements emerge. With a Cat Certified Rebuild, you get the choice to add all-new features to your machine without any additional downtime.



## EXAMINING THE OPTIONS

NOW THAT YOU'VE LEARNED HOW CAT REBUILDS **ADD VALUE** TO YOUR OPERATION, IT'S TIME TO TALK ABOUT YOUR OPTIONS.

With multiple levels and offerings, you can work with your dealer to find a solution for you. Whether you need a head to toe, Cat Certified Machine Rebuild that checks all the boxes, a rebuild specific to one component, or a customized Dealer Rebuild tailored to your exact needs – your Cat dealer has you covered.



## CAT® CERTIFIED MACHINE REBUILD

A CAT CERTIFIED FULL MACHINE REBUILD MEANS YOUR MACHINE IS COMPLETELY DISASSEMBLED AND PUT BACK TOGETHER. APPROXIMATELY 7,000 PARTS ARE REPLACED WITH **NEW OR REMANUFACTURED CAT PARTS**.

A full machine rebuild gives the machine you trust a new life, and the option of all new enhancements, upgrades, value and more. After a Cat Certified rebuild, you'll be given a Cat Rebuild Identification Number — proving your machine has been tested and rebuilt to the highest standards. Get a new life for your machine, and the maximum return on your investment, with a Cat Certified Machine Rebuild.





## CAT CERTIFIED POWERTRAIN & POWERTRAIN PLUS REBUILD

YOUR POWERTRAIN IS THE **HEART OF YOUR MACHINE**. SO, WHEN IT GOES DOWN, IT'S IMPORTANT TO FIND THE RIGHT FIX. A CAT CERTIFIED POWERTRAIN REBUILD REPLACES APPROXIMATELY 3,000 PARTS WITH **NEW OR REMANUFACTURED CAT PARTS**, INCLUDING THE RADIATOR, ENGINE, TRANSMISSION, TORQUE CONVERTER, FINAL DRIVE AND AXLE.

A Cat Certified Powertrain Plus Rebuild reconditions your powertrain plus other key areas like the mainframe, hydraulics, undercarriage and more. Both are a fraction of the price of buying a new powertrain, and both extend the service life of your machine — making it a great option for your bottom line.

### **PROTECT YOUR POWERTRAIN WITH A CVA**

Cat Powertrain Guarantee Customer Value Agreements (CVAs) offer valuable protection after the standard machine warranty expires — guaranteeing component life. Even more, you have options. You can tailor a Powertrain CVA to fit your specific needs, get component or full powertrain coverage, explore prorated and non-prorated options and more. It's a protection plan that makes sense for your operation..



## CAT CERTIFIED MACHINE COMPONENT REBUILDS

Component costs can drastically impact a mine's production and owning and operating costs, but one of the benefits of owning a Cat machine is that its components are built to be rebuilt. A Component Rebuild is the replacement and reconditioning of essential machine components — including machine engines, transmissions, axle assemblies, torque converters and final drives.

Along with replacing non-reusable parts, Component Rebuilds improve your machine's parts with the latest engineering. Cat Certified or custom dealer component rebuilds are a great way to take advantage of the Caterpillar, "built to be rebuilt" design.

# EVEN MORE CAT® CERTIFIED OPTIONS

## CAT CERTIFIED COMMERCIAL ENGINE REBUILD

Your Cat engine is built to perform for multiple lifetimes. Maximize the durability and performance of your Cat commercial and industrial engines, including marine propulsion engines, generator sets, pumps, locomotives and other power systems.

## CAT CERTIFIED HYDRAULIC REBUILD

Restores like-new performance to your excavator's hydraulic system including pumps, motors, valves, accumulators, hoses, lines, tanks, coolers and cylinders. Avoid the costs and downtime of repairing these components one at a time and get maximum return on your machine investment.

# AVAILABILITY

## ELIGIBLE MACHINES

### ARTICULATED TRUCKS

725, 730, 735, 740, 745



### ENGINES

3056, 3116, 3126, 3176, 3304, 3306, 3406, 3408, 3412, 3456, 3508, 3512, 3516, 3606, 3608, 3612, 3616, 3618, C2.2, C4.4, C6.6, C7, C7.1, C9, C10, C11, C12, C13, C15, C16, C18, C27, C32, C175-16, G3304, G3306, G3406, G3408, G3412, G3508, G3512, G3516, G3520, G3606, G3608, G3612, G3616, PM3516



### HYDRAULIC EXCAVATORS

336, 345, 349, 350, 365, 374, 375, 385, 390



### HYDRAULIC MINING SHOVELS

5080, 5110, 5130, 5230, 6015, 6020



### MOTOR GRADERS

16, 18, 24



### OFF-HIGHWAY TRUCKS

776, 777, 785, 789, 793, 795, 797



### TRACK-TYPE TRACTORS

D9, D10, D11



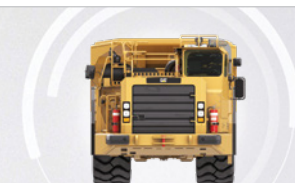
### UNDERGROUND MINING LOADERS

R1300, R1600, R1700, R2900, R3000



### UNDERGROUND MINING TRUCKS

AD30, AD45, AD55, AD60, AE40



### WHEEL DOZERS

834, 844, 854



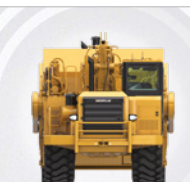
### WHEEL LOADERS

986, 988, 990, 992, 993, 994



### WHEEL TRACTOR SCRAPERS

627, 637, 657



## FREQUENTLY ASKED QUESTIONS

- 1 WHAT ARE THE BIGGEST DIFFERENCES BETWEEN DEALER REBUILDS AND CAT CERTIFIED REBUILDS?**
  - + **Dealer Rebuilds:** customized to customer-specific needs
    - Engineering updates are optional.
    - Not all parts need to be inspected/replaced. Customers may choose what fits their operation's needs.
  - + **Cat Certified Rebuilds:** a set process globally defined by Caterpillar
    - There are parts that must be inspected, reused or replaced.
    - Includes testing and inspections.
    - Requires certain engineering updates.
    - Has a strict set of standards to follow.
    - Full machine Cat Certified Rebuilds get a rebuild identification number that give it a new identity.
- 2 CAN I FINANCE MY REBUILD THROUGH CAT FINANCIAL?**
  - + Dealer Rebuild: Yes, most customers are able to finance through Cat Financial. Eligibility will vary depending on country or region.
  - + Cat Certified Rebuild: Yes, most customers are able to finance through Cat Financial. Eligibility will vary depending on country or region.
  - + Customers may also bundle Customer Value Agreement (CVA) offerings at the time of their rebuild.
- 3 HOW LONG DOES A REBUILD TAKE?**
  - + Varies depending on type of rebuild.
    - Component Rebuild (2-3 weeks),
    - Powertrain Rebuild (4-8 weeks)
    - Full Machine Rebuild (8-12 weeks).
  - + All timeframes are guidelines given to the dealers; time may vary on circumstance.
- 4 WHAT DOES "SAME-AS-NEW SUPPORT" MEAN FOR A DEALER REBUILD?**
  - + This is defined by the dealer and type of warranty they offer.
  - + Cat dealers have the parts, service and expertise available to keep your rebuilt machine or components on the job.
- 5 WHAT DOES "SAME-AS-NEW SUPPORT" MEAN IN A CAT CERTIFIED REBUILD?**
  - + A 12-month warranty on components or full machine — depending on rebuild .
  - + Obtaining a CVA for the machine's second life can help cover and plan for future maintenance and rebuilds.
  - + Most EPP offerings are available for Cat Certified Rebuilds.
  - + Cat dealers have the parts, services and expertise available to keep your rebuilt machine or components on the job.

## FREQUENTLY ASKED QUESTIONS

- 6 ARE REBUILDS DONE ON-SITE OR AT A CAT DEALER?**
  - + Certain jobsites are eligible for on-site rebuilds.
  - + Work with your dealer to coordinate your rebuild location.
- 7 WHAT EQUIPMENT PROTECTION OPTIONS CAN I GET WITH A DEALER REBUILD?**
  - + Some Equipment Protection Plan (EPP) options are available for dealer rebuilds.
  - + Dealers define coverage outside of EPP offerings.
- 8 WHAT EQUIPMENT PROTECTION OPTIONS CAN I GET WITH A CAT CERTIFIED REBUILD?**
  - + Equipment Protection Plan (EPP) options are available for most models.
  - + EPP will vary depending on country/region.
  - + Terms are customizable.
- 9 WHAT IS THE DIFFERENCE BETWEEN A DEALER COMPONENT REBUILD AND CAT REMAN?**
  - + A dealer rebuild scope of work varies depending on the dealer, customer and need.
  - + Engineering updates are incorporated into Cat Reman.
- 10 WHAT IS THE DIFFERENCE BETWEEN A CAT CERTIFIED COMPONENT REBUILD AND CAT REMAN**
  - + Rebuilds are done by the dealer, Cat Reman is done by Caterpillar.
  - + Dealer rebuilt piece parts are put back into the same components. For Cat Reman, the same piece parts are exchanged and do not go back into the original component.
  - + Warranty and EPP terms may differ depending on the component.





**TALK TO YOUR DEALER** TO LEARN MORE ABOUT YOUR CHOICES. WITH REBUILD AND FINANCING OPTIONS, THERE'S A SOLUTION THAT'S PERFECT FOR YOUR BUSINESS. GET THE BEST RETURN ON YOUR EQUIPMENT AND **PROTECT YOUR OPERATION TODAY.**



PEDJ1242

© 2023 Caterpillar. All Rights Reserved. CAT, CATERPILLAR, LET'S DO THE WORK, their respective logos, "Caterpillar Corporate Yellow", the "Power Edge" and Cat "Modern Hex" trade dress as well as corporate and product identity used herein, are trademarks of Caterpillar and may not be used without permission.