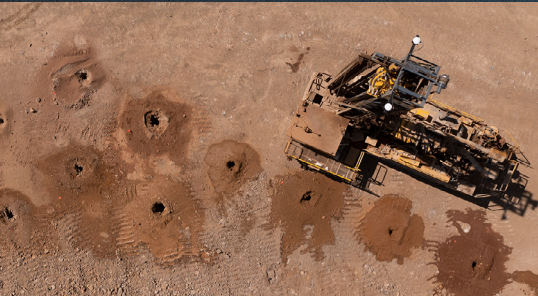




GET MORE OUT OF YOUR DRILLING, GRADING AND LOADING OPERATION



There's more to mining than hauling material. The success of your operation also depends on efficient, accurate and productive drilling, grading and loading.

Cat® MineStar™ Terrain can help improve these critical operations. Combining advanced guidance tools, instant operator feedback and real-time progress reporting, Terrain helps ensure that drilling, grading and loading operations run safely, consistently and according to plan.

Terrain gives you the power to:

IMPROVE the accuracy of blasthole placement, truck payloads, ore control and grades.

MONITOR the amount and types of materials drilled, moved and loaded.

CONTROL costs by reducing rework, process variation, uneven bench heights and more.

ENHANCE safety through the use of avoidance zones, operator alerts, machine location tracking and more.

COMMUNICATE seamlessly with Cat MineStar Fleet and other mine management systems.

CAPABILITIES

Terrain for Drilling

Terrain for drilling provides precision guidance that helps operators complete patterns accurately and productively. It pays other dividends, as well, by improving safety, reducing costs and recording data about drilled stratification to aid in planning blasts and improving fragmentation. Strata enablement utilizes Measured While Drilling (MWD) data to provide granular strata structure and relative rock hardness for blasting.

Terrain for Grading

Terrain for grading eliminates surveying and staking while helping operators work more productively. Satellite guidance and automated blade control improve grading efficiency. The system displays progress to reduce rework and increase effective utilization.

Terrain for Loading

Terrain for loading improves payload accuracy by recording the amount and type of material for accurate ore control and load tracking. The system provides feedback about cycle times, swing angles and tons. It connects with any fleet management system



DRILLING



GRADING



LOADING

For more information, visit www.cat.com/terrain or contact your local dealer.