

B768 TRACK FELLER BUNCHER



ULTIMATE PERFORMANCE.

Powerful tractive effort, maximum lift capacity, leading swing torque, and optimal reach provides the ultimate performance needed in demanding bunching applications worldwide. Machine can be paired with heads with a capacity as large as 27”.



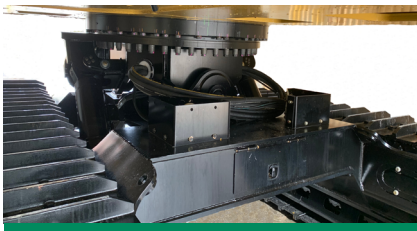
OPTIMIZED EFFICIENCY.

The optimized hydraulic system consists of eight dedicated pumps and was designed specifically to maximize efficiency in feller buncher applications. Closed loop drive and closed loop swing offer excellent multi-functioning capability and facilitate smooth, fluid machine operation.



ROCK SOLID STABILITY.

A combination of weight distribution, a low center of gravity, redesigned roller frames, and an optimized working envelope provides rock solid machine stability. The transverse mounted engine provides uniform weight in the back of the machine at all times.



VERSATILE LEVELING SYSTEM.

The new, state of the art leveling system, provides the leveling capability demanded by high production steep slope applications. Large pins, engineered structures, and the largest-in-class swing bearing ensure maximum durability and low operating costs.



ELEVATED OPERATOR COMFORT.

The spacious cab design provides excellent forward and right-side visibility, easy access, and options that include a heated and cooled seat. The optional 10 LED front facing lights offer optimum visibility day and night. Machine controls feature an easy to use Weiler operator interface.



EXCELLENT SERVICEABILITY.

A canopy and two gull-wing style access doors open hydraulically for full under hood access and provide a stable platform for repairs. Walk-through machine access allows the operator to walk from the cab to the opposite side of the machine without stepping on the ground.



B768 SPECIFICATIONS

ENGINE MODEL	Cat® C9.3B Tier 4 Final	SWING TORQUE	92,000 ft-lbs 124.7 kN-m	FUEL TANK CAPACITY	293 gal 1108 L
GROSS POWER	330 hp 246 kW	TRACTIVE EFFORT	111,122 lbf 494.3 kN	ENGINE OIL CAPACITY	6.5 gal 24.5 L
ENGINE DISPLACEMENT	568 in³ 9.3 L	UNDERCARRIAGE SIZE	349 HD HEX	HYDRAULIC SYSTEM CAPACITY	79 gal 300 L
WEIGHT (NO HEAD)	90,000 lb 40 823 kg	UNDERCARRIAGE PITCH	8.5" 216 mm	TRANSPORT WIDTH	11' 2" 3.47 m
MAX FLOW	441 gpm 1670 L/min	GROUND CLEARANCE	25.6" 650 mm	HEIGHT	13' 4" 4.06 m
MAX REACH (NO HEAD)	22' 9" 6.92 m	TRACK GAUGE	108" 2740 mm	LENGTH (BOOM EXT., w/CP222)	40' 0" 12.19 m
LIFT AT MAX REACH (NO HEAD)	22,050 lb 10 000 kg	TRACK LENGTH	214" 5441 mm	LEVELING SYSTEM CAPABILITY	22° Forward / 7° Rear 15° Side-to-Side

Base configuration includes standard feller buncher boom and stick and 24" (600 mm) single grouser shoes.

POWERTRAIN

Cat C9.3B engine certified to Tier 4 Final
 Primary, secondary, and tertiary fuel filters, including water separator
 Side-by-side radiator, oil cooler, and air-to-air cooler
 Swing out air conditioner condenser
 Removable debris screen
 Centrifugal engine air pre-cleaner
 Under-hood 2-stage engine air cleaner
 Variable speed, hydraulic reversing fan with guard
 Heavy-duty starter and ether aid

UNDERCARRIAGE

Heavy-duty track roller frames
 Grease-lubricated 349 HEX track
 Heavy-duty upper slides
 Heavy-duty bottom track rollers
 Heavy-duty recoil mechanisms
 Full length track shoe support
 Heavy-duty travel motor and swivel guards
 Towing eyes on base frame
 Leveling system w/ 22° of forward tilt, 7° of rear tilt, & 15° of side-to-side tilt

HYDRAULICS

Dedicated hydraulic pump for implement functions
 Two dedicated pumps for left and right closed loop drive circuits
 Dedicated pump for closed loop swing circuit
 Dedicated attachment pump for head functions
 Independent dedicated saw, fan, and charge pumps
 High-performance hydraulic return filters
 336 size, high torque swing drive
 Swing cushion valve and automatic swing parking brake
 Electric hydraulic oil fill pump

ELECTRICAL

115 ampere alternator
 24-volt electrical system with 2 12-volt batteries
 10 LED working lights and 2 LED service lights
 Horn and travel alarm
 Secondary engine shut off switch
 Product Link™ ready

SALES AND SERVICE

Sold and serviced exclusively through Weiler Forestry dealers worldwide.

OPERATOR ENVIRONMENT

Enclosed FOPS/ROPS/OPS/OR-OSHA/WCB certified cab
 Air suspension with integrated joysticks and head rest
 Left-hand tilt console
 Heated and cooled seat with retractable 4-point seat belt
 Touchscreen display monitor and programmable operator controls
 Scratch resistant polycarbonate windows
 Reverse slope 1.25" (32 mm) front windshield
 Front window emergency escape
 Skylight
 Left-side fresh air window
 Pressurized cab with filtered ventilation
 Heater / air conditioner / defroster / sun screens
 Radio ready with speakers
 Mount locations for CB radio and other accessories
 Behind seat storage tray
 Three cup holders, two USB sockets, and literature holder

OTHER STANDARD EQUIPMENT

Heavy-duty hood enclosure
 Two gull-wing style engine compartment doors
 Heavy-duty counterweight with machine level engine enclosure access
 Heavy-duty doors, covers, and bottom guards
 Two tool boxes, one on upper side of upper frame and one in carbody

OPTIONAL EQUIPMENT

Standard Feller Buncher Boom and Stick
 Intermittent Saw Boom and Stick
 Boom and Stick Omission
 24" (600 mm) SG 336 HD HEX Track
 28" (710 mm) SG or DG 336 HD HEX Track
 Vacuum Pump
 Rear Camera
 Deluxe LED Lights
 Two Additional Batteries
 Cold Weather Oil and Coolant
 Arctic Preheater
 PL243 Cellular Product Link
 PL611 Satellite Product Link
 CP222 Continuous Saw w/ Full Tilt - 22.5" (572 mm)

WARRANTY

12 months standard. Extended warranty available.